



# HALLMARK HARDWOODS®

CABINETRY DIVISION



**PRODUCT GUIDE**



# THE TRUE MARK OF QUALITY

## CONTENT

6	Hallmark Hardwoods®
7	Monogram Manufacturing
8	The Talisman Collection
9	Cabinet Materials
10	Door Construction
12	Cabinetry Division   Houston

# CABINETS COUNTERTOPS & FLOORING





WOOD  
ELEVATED



# WELCOME TO HALLMARK HARDWOODS®

---

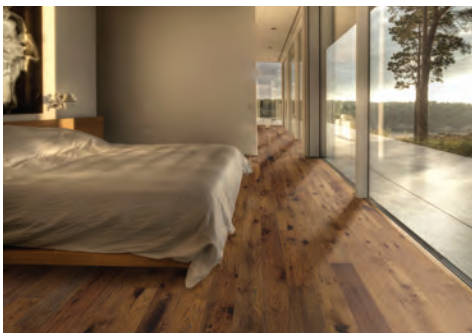
## Hallmark Floors, Inc.

Ever since our inception in 1998, Hallmark Floors continues to be driven by our love for wood and our passion for developing, producing and offering the most beautiful, smart and innovative flooring and hardwood products. Handcrafted in small batches by professional hardwood craftsmen, our wood floor collections are developed and designed to enhance the beauty of all types of homes and interiors, from cozy and traditional to cool and contemporary living.

## Developing a state-of-the-art cabinet factory

In early 2020, the company was ready for the next step when it purchased a million square foot parcel in Vietnam. This was the start of developing the first phase of our state-of-the-art, Hallmark Hardwood Cabinets factory called Monogram - a 600,000 sq.ft. facility to serve the North American market. The second phase, to be completed in early 2023, will bring an additional 400,000 sq.ft. of cabinet & plywood manufacturing space, allowing for production to surpass original estimates of 150 containers per month.

A strong reason behind the success of the company is its unique corporate culture, based on humility, fairness, and customer satisfaction. From the order desk to the factory floor, all understand the company's mission. The system is supported by the company's ability to control its supply chain. With American and European logs and timber, Hallmark produces plywood, dimension lumber, and veneers into flooring, cabinets and countertops; limited waste is diverted for energy production. Meanwhile, the company's long-term competitive advantage includes the quality of its organization, vertical integration and complete utilization of raw materials. The last 20 years have brought Hallmark substantial growth, that is now providing new and exciting opportunities for the company's customers. The goal is to continue delivering high quality, fashion driven products to customers today and in the future.





# MONOGRAM MANUFACTURING

---

Hallmark's manufacturing facility, Monogram, is located in the Bau Bang District of Vietnam, just north of Ho Chi Minh City. We have 600,000 sq ft of facility space for the cabinetry manufacturing, and 400,000 sq ft of production space for plywood & cabinetry manufacturing coming online in early 2023 - estimated output over 150 containers of cabinetry / month.

**DRYING KILN** - At present, we are the only manufacturer with our own drying kiln in southeast Asia. We have built 4 drying kilns and each kiln set up 80m<sup>3</sup>, with automatic drying equipment and digital moisture control.

**LUMBER PROCESSING** - Monogram is also the only manufacturer with in-house timber processing capabilities in southeast Asia, ensuring a stable material supply channel with moisture content control. Monogram also uses the German "Hpoint" brand for processing raw-material to semi-finished parts in Oak, Hickory, Walnut & Birch.

**4-SIDE MOULDER MACHINE** - These four-sided moulder machines, manufactured by Weinig, produce door and frame parts, ensuring each component meets our quality control levels.

**DOUBLE-END DRILLING & MILLING MACHINES** - We utilize a number of double-end drilling and milling machines manufactured by the Italian brand HOMAG to process door and frame parts, ensuring each component meets our quality control levels.

**DOUBLE-END SANDING & MILLING MACHINES** - Double-end sanding & milling machines, are used to process door parts in consistent shapes, ensuring each component meets our quality control levels.

**CNC MACHINES** - Monogram has multiple CNC machines, to manufacture corresponding parts at the correct size, to ensure each component meets our quality control levels.

**SANDING MACHINES** - Utilizes Taiwan "ChiaLung" brand machines to process components for the cabinets.

**FLAT LINE MACHINERY** - Monogram also utilizes the Italian "Cefla" brand equipment for painting. We currently have 4 'Cefla' flat-line machines for the first stage of production in the painting line.

**UV ROLLER COATING LINE** - Monogram uses the Taiwan "Fengchaou" brand for UV roller coating line for processing components. We have 6 sets of equipment for the first stages of production.

**TRADITIONAL HANG LINE** - We have put together a state-of-the-art finishing hang line that showcases an advanced furniture craft production process.

**MONTHLY PRODUCTION CAPACITY** - The production capacity for our famed and frameless cabinet factory can produce over 150 containers per month.



# THE TALISMAN COLLECTION

CABINETRY YOUR CUSTOMER NEEDS

---

Hallmark has rethought the cabinet buying experience by including the most desired cabinet upgrades in our Talisman line at a reasonable pricepoint.

- Frameless Box Construction.
- All Plywood,  $\frac{3}{4}$ " Nominal Box Construction.
- $\frac{5}{8}$ " Dovetail Drawers with  $\frac{3}{8}$ " bottom & Soft-close Hardware.
- Soft-close, Six-Way Adjustable Hinges.
- 13" Depth Upper Cabinets for Storage.
- Full Depth Base Cabinet Shelves.
- Designer Features at Reasonable Prices:
  - Floating Shelves,
  - Suspended Vanities
  - DoubleThick Open Shelves
- Dowel/Case Clamp Construction (Furniture Box) – Glue, staples and screws used.
- Integrated Cabinet Aluminum Pull on Wall Door Cabinets.
- ADA Cabinet Options.

SOLANO DOORSTYLE - 3" wide stile and rail,  $\frac{3}{4}$ " thick Five Piece Door with Reversed Raised Center panel – available in three solid colors, White, Grey and Blue.

A solid White oak door is also offered in the same door style.



---

Door joints in particular are likely to react to the conditions of their environment. Gaps that may develop are not included or covered by this limited liability warranty. This limited liability warranty does not cover or apply to hairline cracks of painted finishes; hairline cracks are unavoidable in wood cabinets given the nature of the material. Every species and grade of solid wood behaves in such a way as to eventually result in hairline cracks.



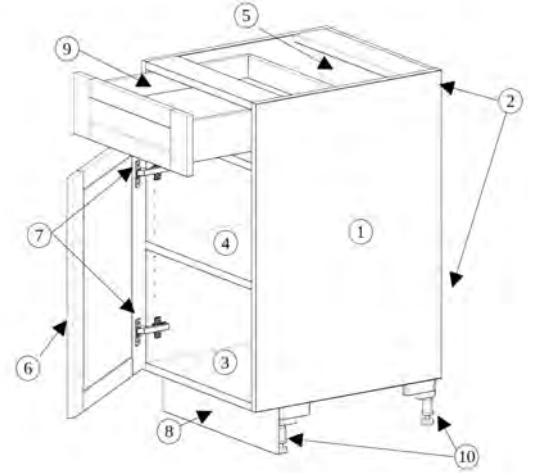
# CABINET MATERIALS

HALLMARK HARDWOODS®

---

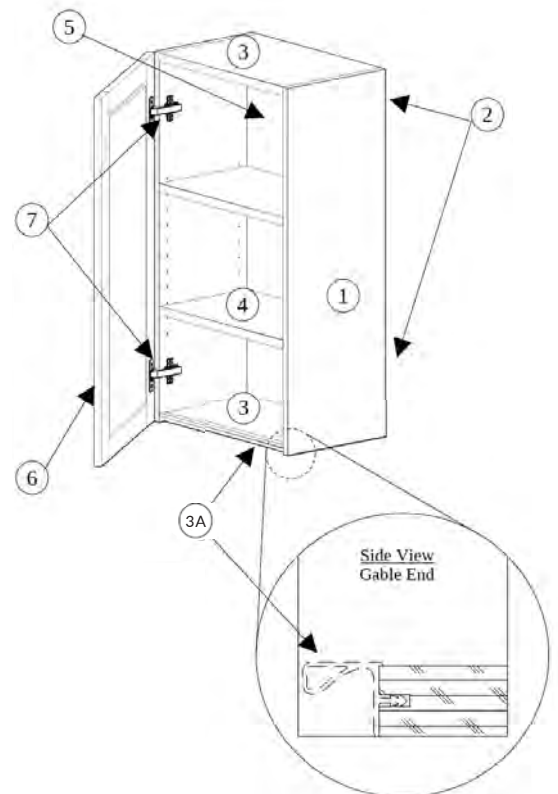
## BASE CABINET

- 1) Side Panels 3/4" nominal (18mm) Birch veneer plywood Int/Ext
- 2) Stretchers 3/4" nominal (18mm) Birch veneer plywood Int/Ext
- 3) Bottom 3/4" nominal (18mm) Birch veneer plywood Int/Ext
- 4) Shelf Full depth 3/4" nominal (18mm) Birch veneer plywood Int/Ext
- 5) Back panel 1/2" plywood recessed 1/8"
- 6) Door Panel
- 7) Hinge Six-way adjustable soft-close
- 8) Toe Kick in 3/4"x96" L
- 9) Drawer box 5/8" solid wood, Fully captured 3/8" bottom, Guide undermount soft-close full extension
- 10) Adjustable Legs



## WALL CABINET

- 1) Side Panels 3/4" nominal (18mm) Birch veneer plywood Int/Ext
- 2) Stretchers 3/4" nominal (18mm) Birch veneer plywood Int/Ext
- 3) Bottom/Top 3/4" nominal (18mm) Birch veneer plywood Int/Ext
- A) Bottom panel features a "Handle-free aluminum pull"
- 4) Shelf Full depth 3/4" nominal (18mm) Birch veneer plywood Int/Ext
- 5) Back panel 1/2" plywood recessed 1/8"
- 6) Door Panel
- 7) Hinge Six-way adjustable soft-close



# DOOR CONSTRUCTION

HALLMARK HARDWOODS®

---



**STEP 1: CONSTANT TEMPERATURE AND HUMIDITY ROOM**



**STEP 2: PRE-STAINING INSIDE EDGE OF DOOR FRAMES & CENTER PANELS TO ENSURE PROPER COVERAGE**



**STEP 3: DOOR IS ASSEMBLED TO ENSURE SQUARENESS**



**STEP 4: UV ROLLER BASE COATING**

**STEP 5: SHAPING THE DOOR PANEL'S OUTSIDE EDGE**



**STEP 6: DOOR PANEL HINGE HOLES PROCESSING**



**STEP 7: DOOR PANEL SANDING**



**STEP 7: BASE COATING AND FLAT COATING**

# CABINETRY DIVISION

HALLMARK HARDWOODS® HOUSTON FACILITY

---



The company's goal to improve domestic logistics led to the development of a 170,000 sq.ft. manufacturing warehouse and service facility near the Port of Houston; strategically located to better serve its customers east of the Rockies. An additional 65,000 sq.ft. facility is currently under development on an adjacent parcel. West Coast customers are served by our Ontario, CA location.