



# HALLMARK FLOORS®



THE TRUE MARK OF  
QUALITY FLOORING

# WELCOME TO HALLMARK FLOORS®

Ever since our inception in 1998, Hallmark Floors continues to be driven by our love for wood and our passion for developing, producing and offering the most beautiful, smart and innovative flooring.

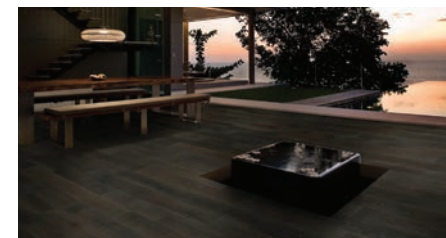
Handcrafted in small batches by professional hardwood craftsmen, our wood floor collections are developed and designed to enhance the beauty of all types of homes and interiors, from cozy and traditional to cool and contemporary living.

Our relentless work and developments of our flooring collections have made us one of the fastest growing wood flooring companies on the market, and we are pleased and proud to offer you over 100 uniquely designed hardwood and waterproof floors.





# CONTENT



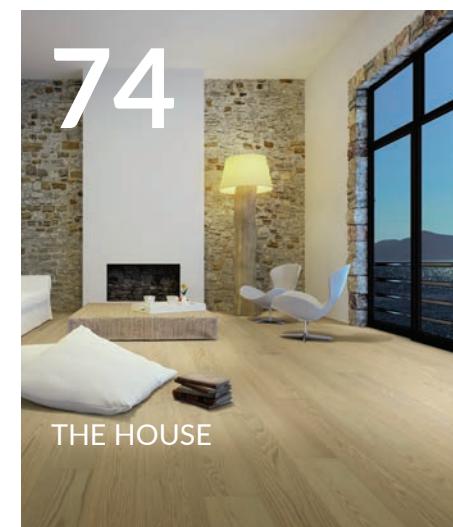
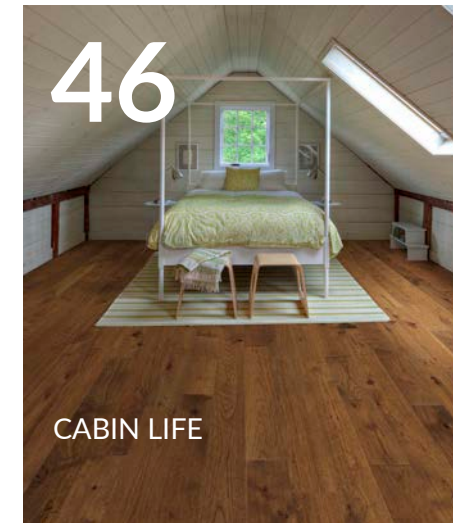
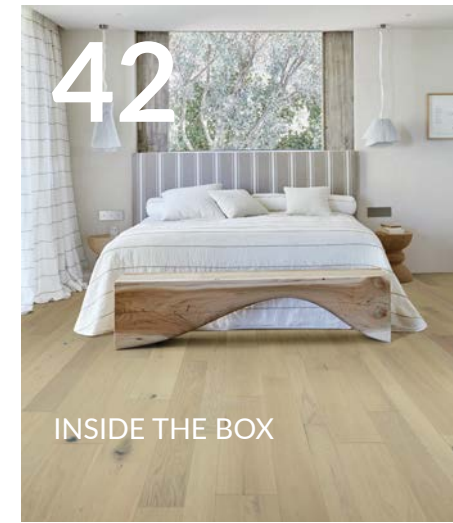
- 6** *Interior Styles*
- 96** *Find Your Floor*
- 98** *Flooring Collections*

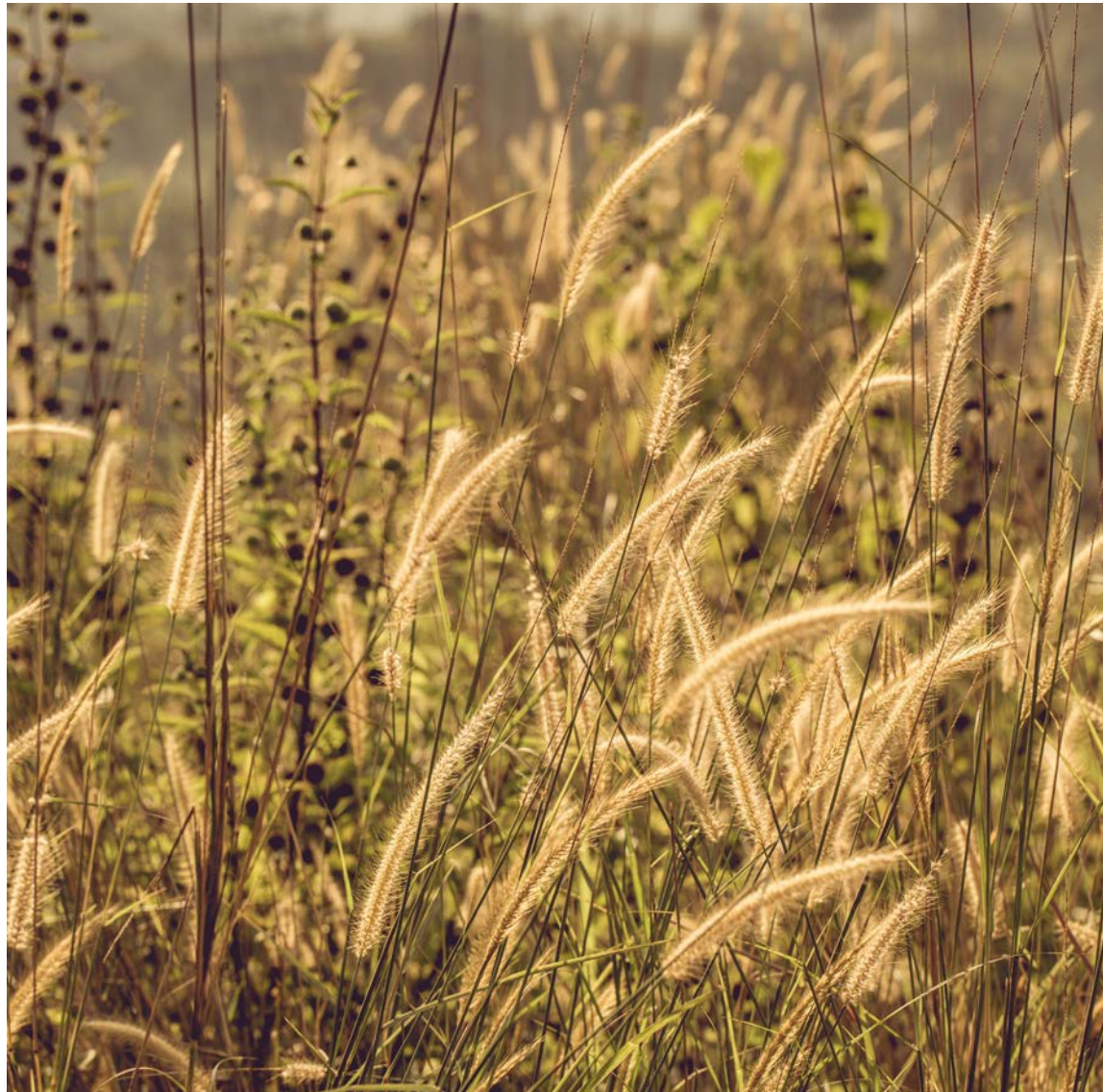
- 114** *Technical details*
- 116** *Room Visualizer*

# INTERIOR STYLES

A beautiful floor can lift any interior. In fact, the floor, more than any other decorating element, has the power to reinforce the feeling you wish to create. A light floor, for instance, adds a sense of light and purity to any decorating style, while a dark and rusting floor creates warmth.

Below, you will find examples of this in different types of interiors, ranging from urban and industrial to rustic and seaside. Our hope is that it will provide you with ideas and images for how to create your dream interior.





## THE SIMPLE LIFE

Endless summer nights, the scent of sea water filling your lungs, and sand sticking to your toes. A good way to hang on to those sweet summer sensations even when winter is dark and gloomy is to create a home filled with light. In this house, an eternal summer mood is achieved through using light wood floors and soft colored walls.





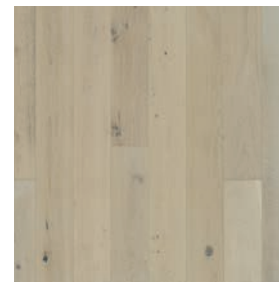
ALTA VISTA, VENICE OAK



VENTURA, PEARL OAK

*The sunny, airy feeling is enhanced by adding elements of natural and tactile materials e.g. breezy, white cotton curtains, sheepskins and carefully selected pieces of wood and bamboo furniture.*

Other floors for this interior style



AVENUE, OCEAN DRIVE OAK



SERENITY, COZY OAK



## NOW AND ZEN

Minimalism starts with the minimal essentials. It is to live life by stripping it down to what is really cherished and enjoyed. In this stunning villa by the water, the beautiful surroundings take center stage and the glorious view through huge windows make all other adornments unnecessary.





ALTA VISTA, MALIBU OAK



COURTIER, CHANCELLOR OAK

*For a dreamy and luxurious zen-like space like this, think pale hues, earthy materials, a few thoughtful accessories, and maybe a light coat of paint, combined with natural hardwood and waterproof flooring.*





The key to creating a zen room is to keep things simple. The decor should be minimal, with only a few carefully chosen pieces that bring a feeling of peace and tranquility. Earth tones and pops of indoor plants can help promote that feeling, coupled with bright views to the outdoors. Stay grounded with a warm floor that is central and carries throughout the entire space.

Other floors for this interior style



VENTURA, MARINA OAK



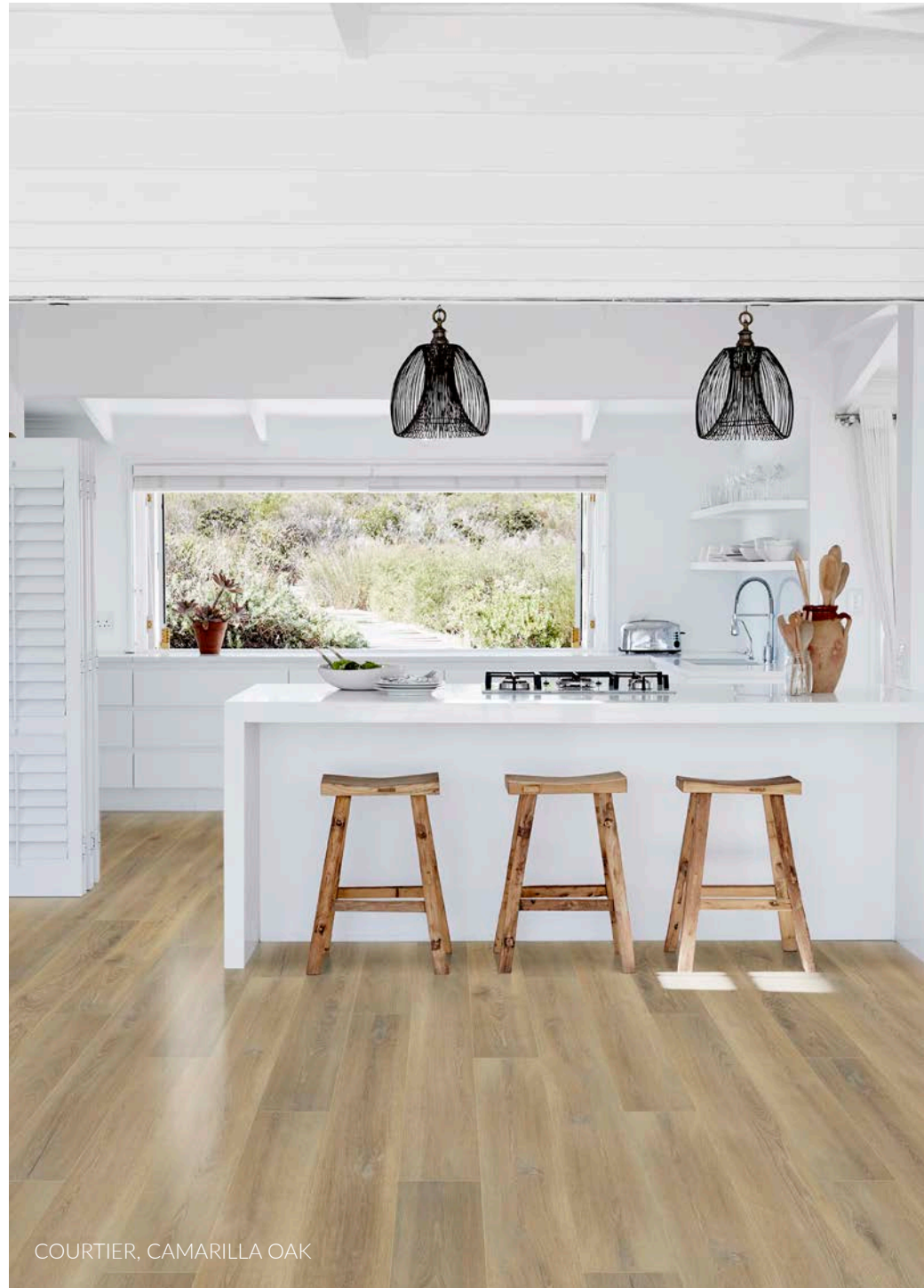
AVENUE, WILSHIRE OAK



## COASTAL VIBES

Magnificently located on the shoreline where the sea meets the sky, this house has been designed to reflect the owner's great passion for surfing and beach life. A monochrome and understated color palette sets the tone of the interior, in which light, sand toned floors enhance the rugged beauty of the beach landscape, bringing the outside in.

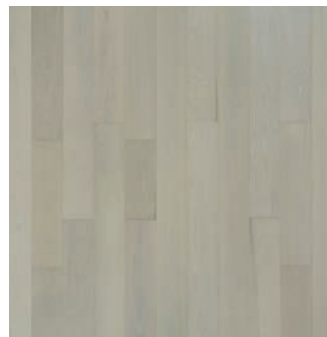




COURTIER, CAMARILLA OAK

The owner has chosen color matched hardwood and waterproof flooring to combine beauty with practicality. The pared back elegance of the interior is further highlighted by the carefully selected pieces of furniture produced from recycled wood.

Other floors for this interior style



SERENITY, PURE OAK



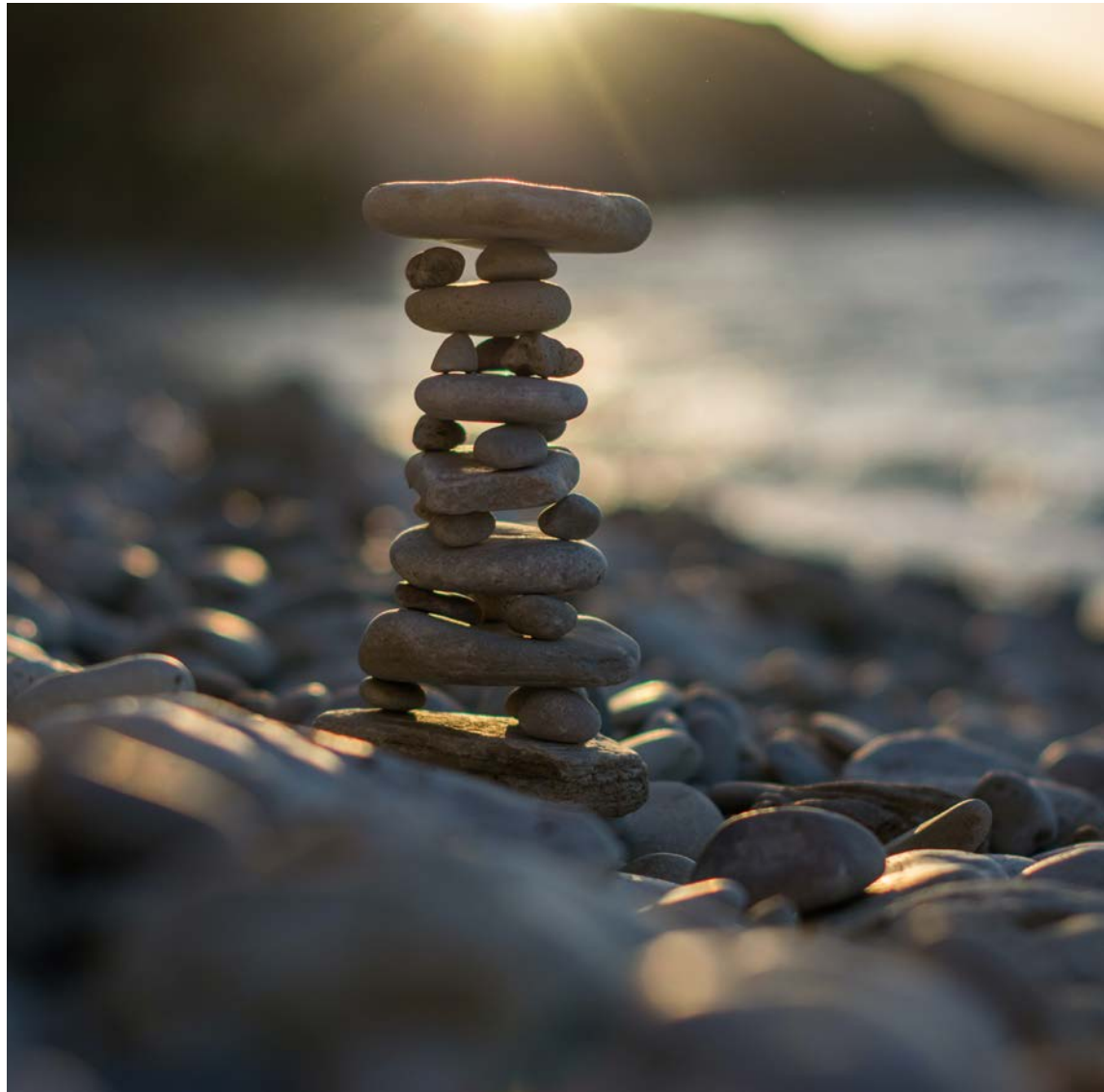
NOVELLA, HAWTHORNE OAK



AVENUE, OCEAN DRIVE OAK



*Striking visuals promote a sense of peace, with white walls and nearly floor to ceiling windows. Clean grade flooring throughout, allows for no distraction to the coastal views outside.*



# SIMPLICITY

Minimalism starts with the minimal essentials. It is to live life by stripping it down to what is really cherished and enjoyed. In this stunning villa by the water, the beautiful surroundings take center stage and the glorious view through huge windows make all other adornments unnecessary. For a dreamy and luxurious zen-like space like this, think pale hues, earthy materials, a few thoughtful accessories, and maybe a light coat of paint, combined with natural hardwood and waterproof flooring.





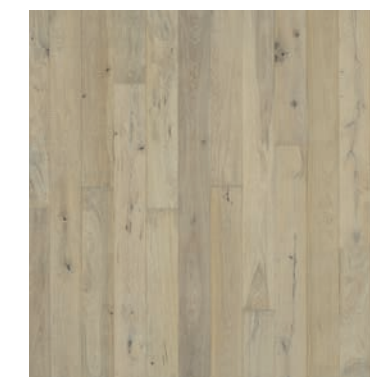
*The light floor would help to reflect the natural light coming in from the windows, making the space feel bright and airy. The view of the outdoors would provide a sense of peace and tranquility.*

Our living spaces have a profound impact on our mental and emotional well-being. When our surroundings are cluttered, chaotic, or stressful, it can be difficult to relax and de-stress. However, when our surroundings are designed to promote serenity and tranquility, we can find peace and balance in our lives. Creating a mindful interior design is an investment in your well-being. By creating spaces that promote serenity and tranquility, you can improve your mood, reduce stress, and boost your overall health and well-being.

Other floors for this interior style



SERENITY, BLISS OAK



GRAIN & SAW, BALLENTINE OAK





## NORDIC NEUTRALS

Explore the serene and timeless influence of Nordic neutrals on interior design. From the use of calming color palettes to the incorporation of natural materials, discover how Nordic neutrals create inviting and harmonious living spaces. Share insights, design tips, and examples of how these neutrals transform homes into minimalist, cozy retreats that balance simplicity and elegance.



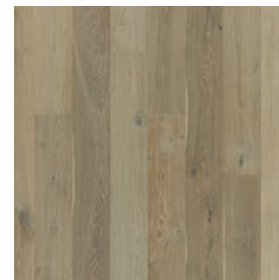




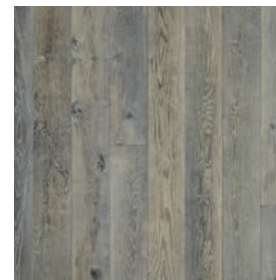
NOVELLA, ALCOTT MAPLE

Wood, stone, and leather are all popular materials in Nordic interior design. These materials give the space a warm and inviting feel. Nordic interior design is a great way to create a light, airy, and comfortable space. If you are looking for a style that is both stylish and functional, then Nordic interior design is a great option for you.

Other floors for this interior style



VENTURA, WHITE CAP OAK



TRUE, SILVER NEEDLE



COURTIER, KINGSGUARD OAK





# A TIMELESS AESTHETIC

Timeless American interiors are characterized by their simplicity, functionality, and use of natural materials. These interiors are designed to be comfortable and inviting, and they often feature a mix of traditional and modern elements. The interiors often feature personal touches, such as family heirlooms, artwork, or plants. These personal touches help to make the space feel more inviting and lived-in.



Wood is a popular choice for floors in traditional American interiors. It is a warm and inviting material that can add a touch of luxury to any space. Other natural materials that are often used in traditional American interiors include stone, leather, and cotton.





COURTIER, FALCONER OAK



ALTA VISTA, BIG SUR OAK

Timeless American interiors are designed to be comfortable, inviting, and functional. These interiors are often a mix of traditional and modern elements, and they feature simple color palettes and natural materials. If you are looking for an interior design style that will stand the test of time, then timeless American interiors are a great option.

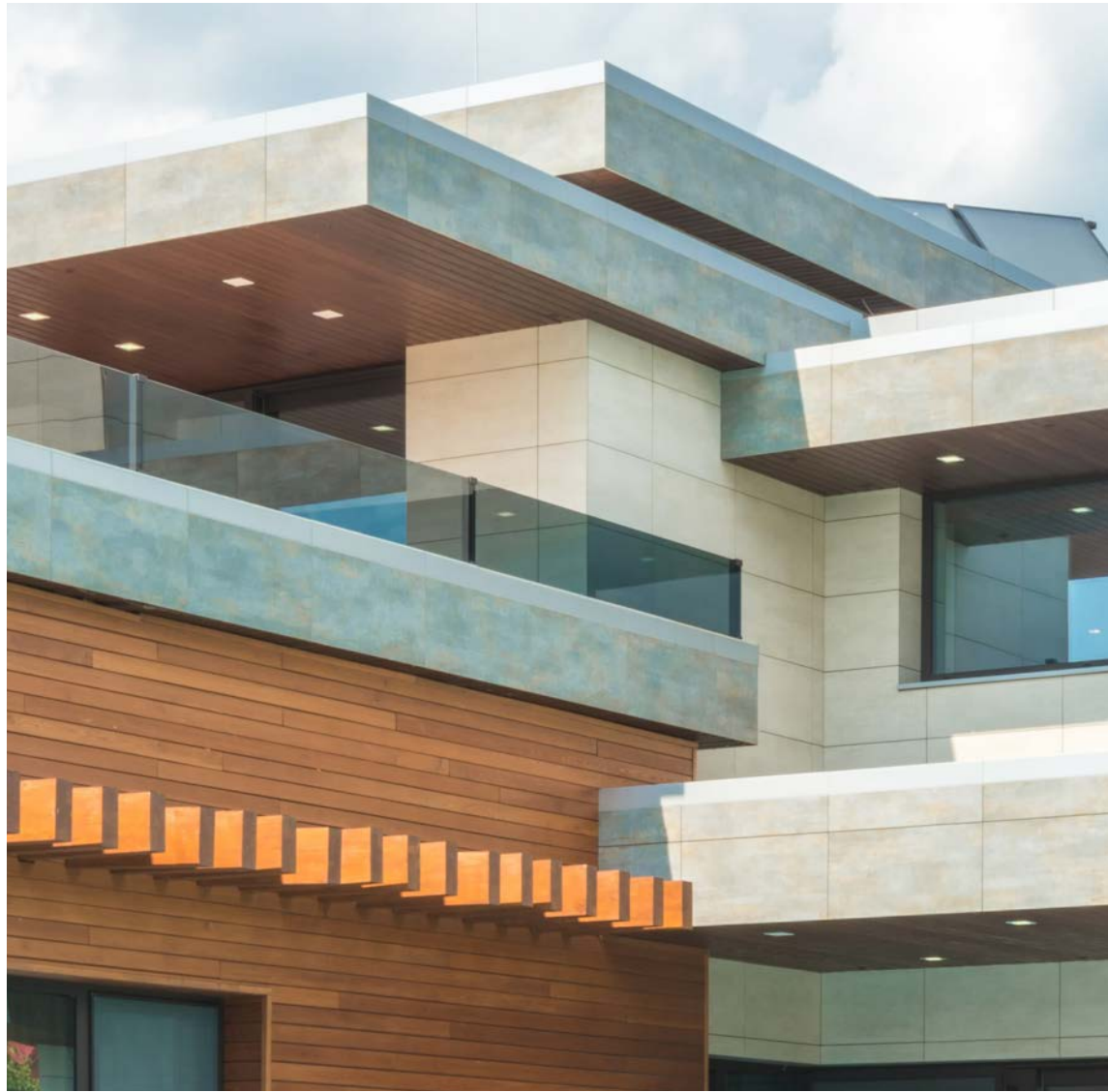
Other floors for this interior style



TRUE, GARDENIA OAK



VENTURA, PIER OAK



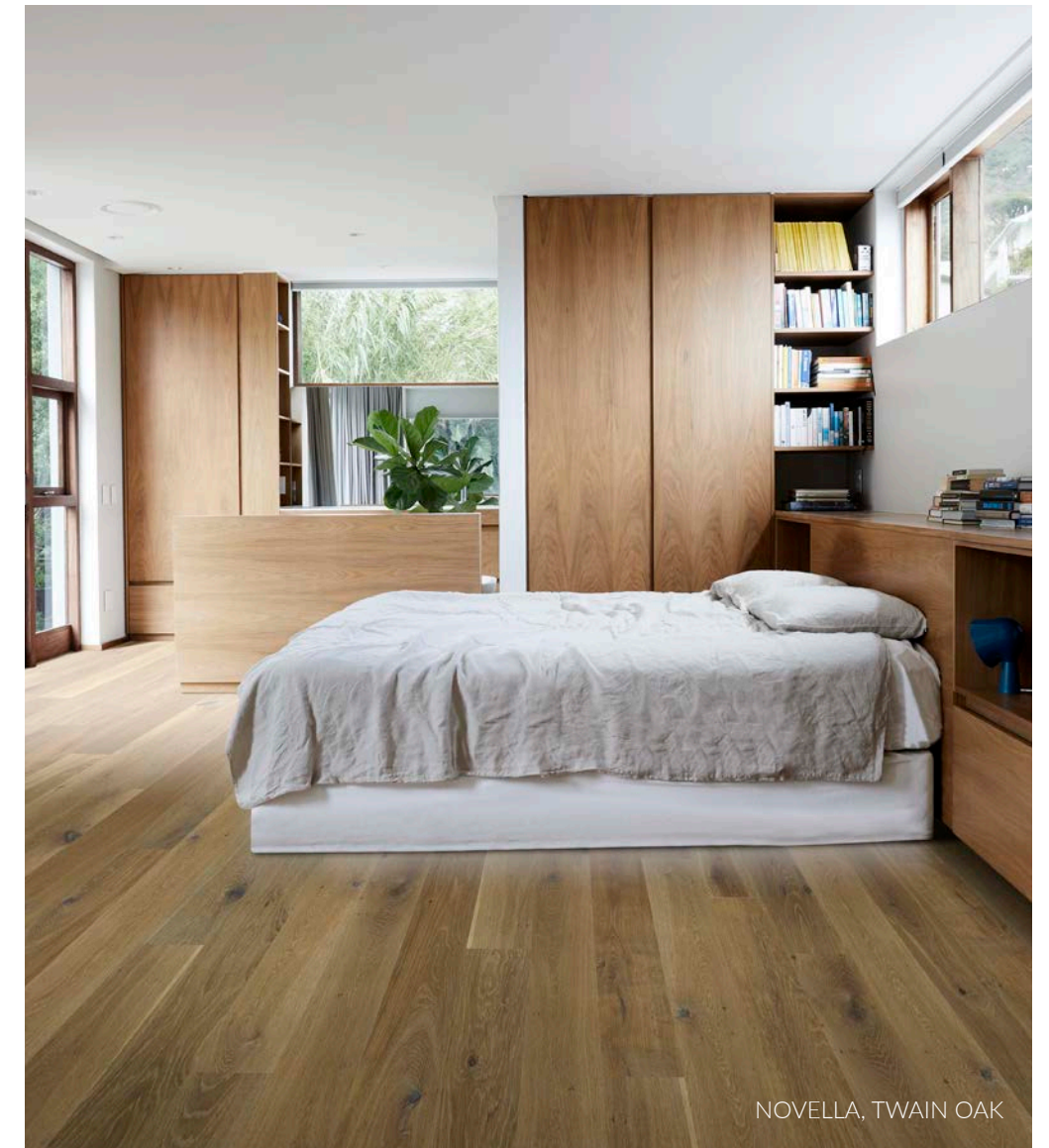
## INSIDE THE BOX

Glass, concrete and wood maintains a neutral palette that let nature perform a starring role. Brown wood floors have been used throughout the house to enhance the raw, yet cozy atmosphere. The minimal color palette used in the interior reflects the home's reverence for nature and its elements. The fireplace is cast with the same concrete as the staircase, adding a visual texture that contrasts with the treated, rustic brown oak flooring and walnut cabinetry.





GRAIN & SAW, MORRIS OAK



NOVELLA, TWAIN OAK

The overall effect of the interior design is one of simplicity and elegance. The neutral palette allows the natural materials to shine, and the minimal use of décor creates a sense of uncluttered space. The home is a perfect example of how to create a modern interior that still feels connected to nature.

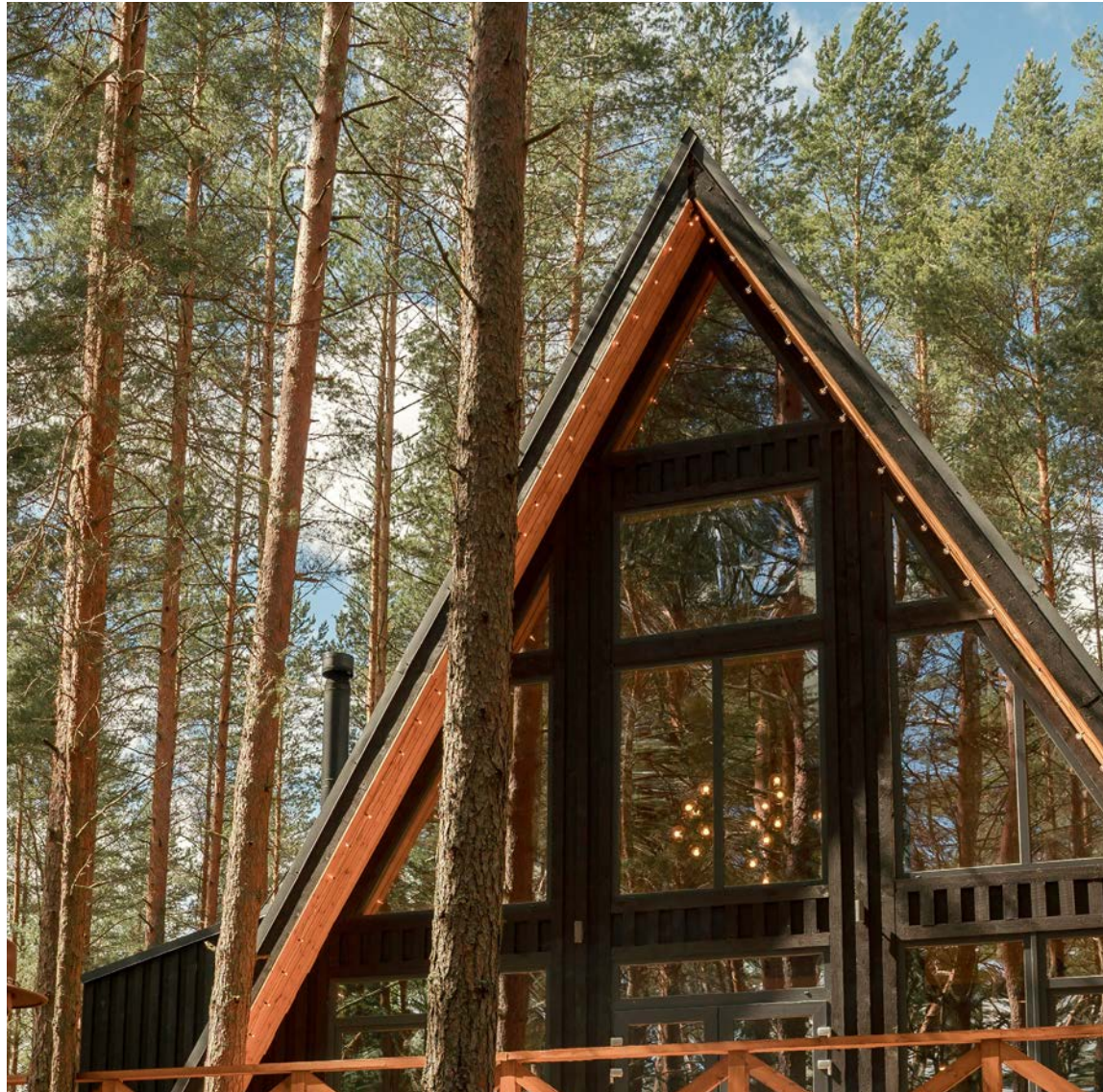
Other floors for this interior style



GRAIN & SAW, MORRIS OAK



COURTIER, CLYDE MAPLE



## CABIN LIFE

The forest has unique powers of restoration. A natural setting, especially under the canopy of a forest, brings peace to both body and mind. That is why a forest retreat is on top of the wish list for many urban dwellers leading a hectic city life. Designed for a simple life during both summer and winter months, the cabin should ideally be rustic yet refined, only equipped with the necessities when opting for a slow living. In these cabins, the connection to the forest is strong and enhanced by a simple, earthy palette, vintage furniture and rustic, brown wood flooring.









## BROOKLYN GLAMOUR

Moody colors and quirky details create an industrial, yet luxurious vibe in many Brooklyn apartments, perfectly offsetting the raw aesthetics of their big city location. Spaces are often naturally quite dark to begin with, so rather than try to change this, a neutral color palette – an antidote to bold and bright – and rustic, often dark, furniture of untreated wood can be used to underline the pared down style. Meanwhile, grey floors create an equally moody, but slightly softer feel to the restrained, yet glamorous interior.





ORGANIC SOLID, TURMERIC HICKORY



TRUE, SILVER NEEDLE OAK

Other floors for this interior style

The use of dark colors and rustic materials creates a sense of warmth and authenticity. The dark colors absorb light, making the space feel cozy and inviting. The rustic materials add a touch of industrial character, which is perfectly suited to Brooklyn's urban environment. The use of grey floors is a great way to add a touch of softness to the industrial aesthetic. The grey floors contrast nicely with the dark colors, and they create a sense of depth and dimension.



COURTIER, CHANCELLOR OAK



ORGANIC SOLID, TARRAGON OAK





## PROVENCE COUNTRYSIDE

The architecture of Provence has its roots in the simple stone farm cottage. Many houses retain a rustic simplicity with native stone and terracotta tile, exposed brick, patinated wood floors and ceiling beams, even distressed finishes. The Provençal style is characterized by neutral color palettes for bedrooms, as refuge from the heat of the day, and honey-hued living spaces warmed by roaring hearths against the chill winds of the Mistral.







NOVELLA, RAND HICKORY



ORGANIC 567, GINSENG OAK

Other floors for this interior style

Country style living is all about embracing the simple things in life. It's about spending time with loved ones, enjoying the outdoors, and creating a home that feels warm and inviting. Rustic flooring with saw marks is a great way to add a touch of country charm to your home. The natural wood grain and the imperfections of the saw marks give the floor a unique and inviting look.



TRUE, MAGNOLIA HICKORY



NOVELLA, FAULKNER HICKORY

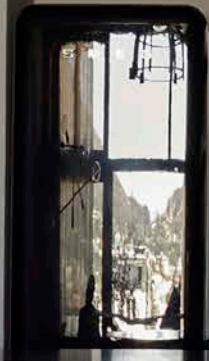


## INDUSTRIAL CHIC

This industrial-style New York apartment is a showcase of smart design combined with urban aesthetics. The multilevel flat offers a continual extended living space spread over four floors, each space connected to the next by industrial-style metal staircases. The home was designed as an open-plan living space. Throughout the home, gray or dark wood floors have been used to enhance the concrete and brick walls, design pieces and quirky object. The varying textures of wood, leather, concrete, carpet and linen keep the effect interesting.









TRUE, ONYX OAK



ALTA VISTA, BIG SUR OAK

Other floors for this interior style



TRUE, NEROLI OAK



ALTA VISTA, PISMO OAK

This stylish apartment in New York City is the perfect blend of industrial and modern. The exposed brick walls and dark hardwood flooring give the space a chic and sophisticated feel, while the modern furniture and fixtures keep it feeling fresh and updated.



## PARIS APARTMENT

The appeal of Parisian style décor is everlasting, being synonymous with elegance, cosmopolitanism and a certain “je ne sais quoi”. The many opulent apartments of the French capital tend to be graced with large windows, timeless crown molding, and, not least, beautiful, vintage looking dark hardwood flooring, adding to the sense of history and elegance. The city’s bustling fashion, culture, and design scene means the apartments also tend to be decorated rather impressively.



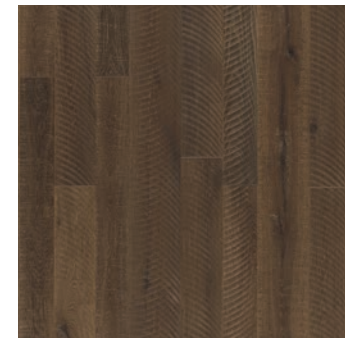




TRUE, NEROLI OAK

Parisian style décor often features vintage accents, such as chandeliers, mirrors, and rugs. These accents add a touch of history and authenticity to the space. The style is perfect for those who want to create a space that is both stylish and timeless.

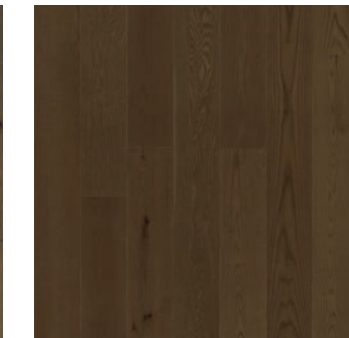
Other floors for this interior style



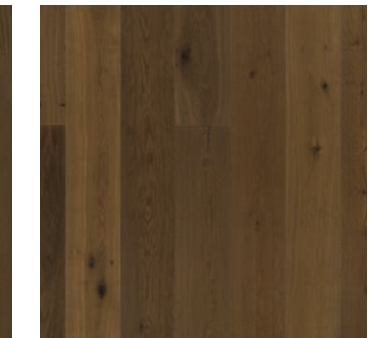
ORGANIC 567, EUCALYPTUS LEAF OAK



GRAIN & SAW, HOFFMAN HICKORY



SERENITY, CALM OAK

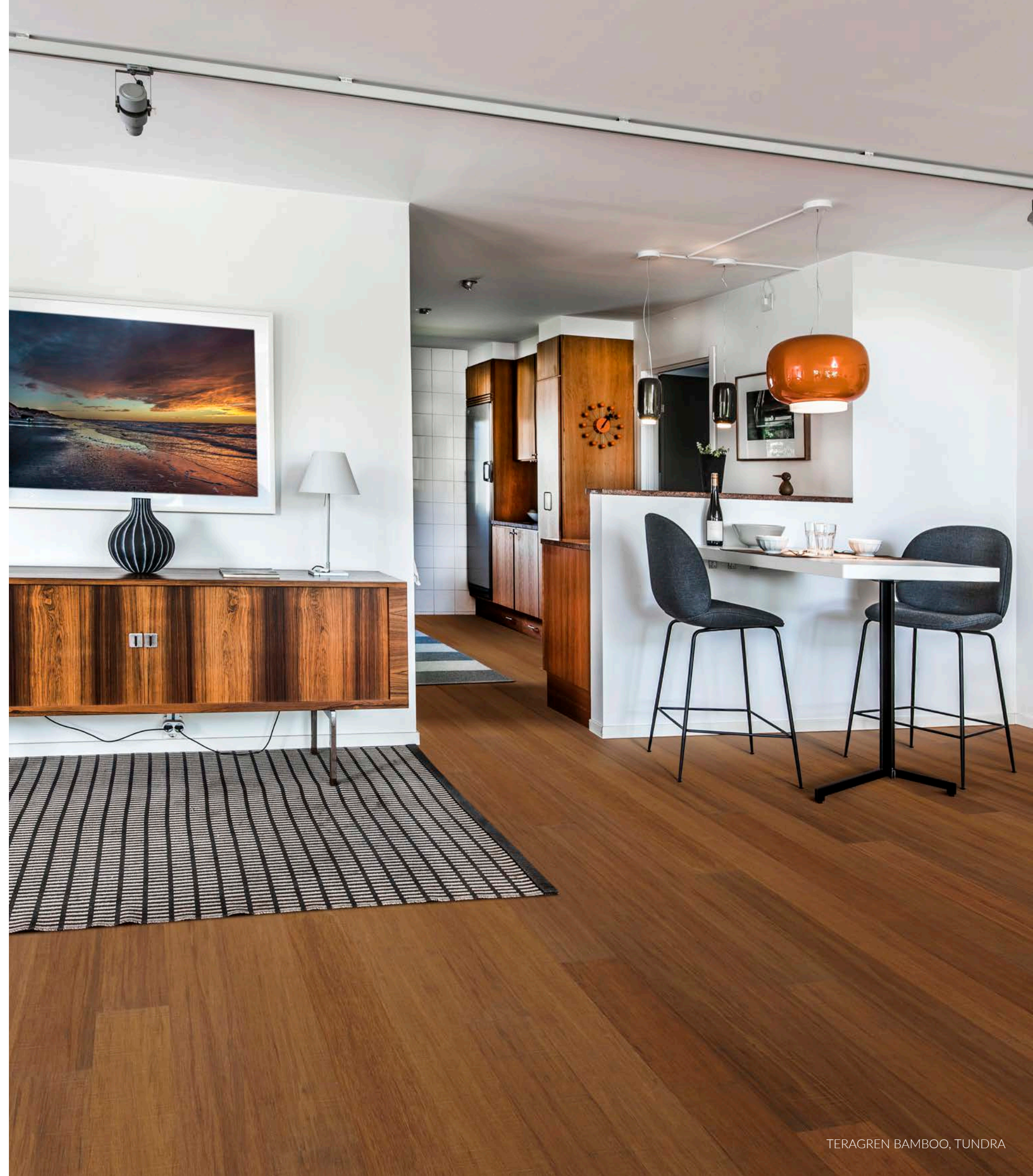


AVENUE, MULHOLLAND OAK



## THE HOUSE

Scandinavian interior design is known for its simplicity, functionality, and use of natural materials. Hardwood flooring is a classic choice for contemporary interiors, as it is both stylish and durable. Various accents can be used to add a touch of contemporary flair to a modern meets functional-inspired space.







GRAIN & SAW, RUSKIN OAK



TERAGREN BAMBOO, WHEAT

Other floors for this interior style

Hardwood flooring is a classic choice for modern interiors. It is both stylish and durable, and it can be found in a variety of colors and finishes to suit any style. Wood is a natural and versatile material that can be used to create a variety of different looks, from traditional to modern, designers use it to add warmth and character to the space.



ORGANIC 567, MARI GOLD OAK



VENTURA, SANDBAR MAPLE





## MODERN COMFORTS

Modern interior design is characterized by its clean lines, minimalist style, and use of natural materials. Hardwood flooring is a classic choice for modern interiors, as it is both stylish and durable. Medium to light brown hardwood flooring is a perfect compliment to this aesthetic, as it adds a touch of warmth and depth to the space.







DESIGN EMPORIUM, QUARTZ OAK



ALTA VISTA, DOHENY OAK



ALTA VISTA, BALBOA OAK



SERENITY, BLISS OAK

Other floors for this interior style

Hardwood flooring is a great way to add a touch of natural warmth and sophistication to any space. In a farmhouse interior, you could choose a light-colored wood floor with a to elevate the space with a modern touch for a classic look.



ALTA VISTA, VENICE OAK



VENTURA, WHITE CAP OAK



# THE GREY CITY

Keep it simple: When using gray interior design and gray flooring, it is important to keep things simple. Too many colors or patterns can make the space feel overwhelming. Instead, focus on creating a clean and uncluttered look.





TRUE, SILVER NEEDLE OAK



TRUE, JUNIPER MAPLE

*A gray living room can be a great place to relax and unwind. You can choose a light gray floor with a smooth finish to create a clean and uncluttered look.*



COURTIER, KINGSGUARD OAK



ORGANIC SOLID, TARRAGON OAK

Other floors for this interior style

There are many different shades of grey available, so it is important to choose one that will complement the overall style of your home. For a modern interior, you might choose a light-grey tone, such as greige or silver. For a more traditional interior, you might choose a darker grey tone, such as charcoal or slate.



COURTIER, STEWARD OAK



AMERICAN TRADITIONAL CLASSICS, LINEN OAK

# FIND YOUR FLOOR

Visit [HallmarkFloors.com](http://HallmarkFloors.com) to FIND YOUR FLOOR. Search by color, finish, species, construction, texture and more! Find the perfect Hallmark Floor for your home aesthetic. Try it today!

**ALL ABOUT COLOR** - Looking for a certain tone but not sure where to start? Here are some of our most popular options for Light, Medium Brown, Grey and Dark floors:

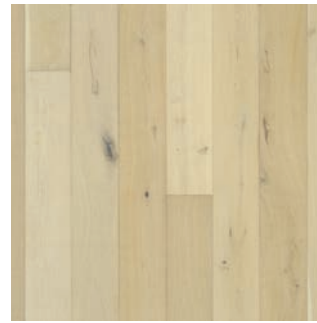
## LIGHT



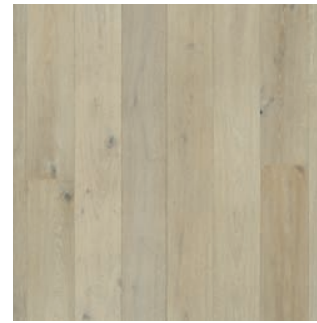
VENTURA, PEAL OAK



ORGANIC 567, HIBISCUS OAK



TRUE, GINGER LILY OAK



ALTA VISTA, BALBOA OAK



ALTA VISTA, LAGUNA OAK



VENTURA, SEASHELL OAK



MONTEREY, APPALOOSA OAK



ALTA VISTA, HUNTINGTON OAK



ALTA VISTA, VENICE OAK



SERENITY, COZY OAK



AMERICAN TRADITIONAL CLASSICS, LINEN OAK



GRAIN & SAW, BALLENTINE OAK



AVENUE, OCEAN DRIVE OAK



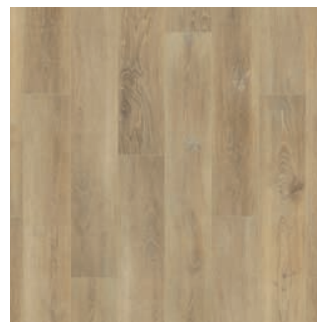
MONTEREY, VILLA OAK



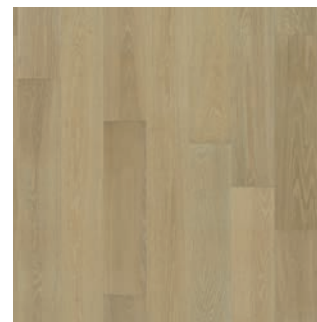
NOVELLA, HAWTHORNE OAK



ALTA VISTA, CARDIFF OAK



COURTIER, CAMARILLA OAK



SERENITY, BLISS OAK



SERENITY, AGLOW OAK



SERENITY, TRANQUIL OAK

## GOLDEN - BLONDE



TERAGREN, WHEAT



ALTA VISTA, MALIBU OAK



VENTURA, SANDAL OAK



AVENUE, BELLE MEADE HICKORY



TRUE, ORANGE BLOSSOM OAK



MONTEREY, ALHAMBRA OAK



MONTEREY, ADOBE RED OAK



VENTURA, MARINA OAK



MONTEREY, CANTINA RED OAK



MONTEREY, CHEYENNE OAK



SERENITY, PEACE OAK



NOVELLA, HEMINGWAY OAK



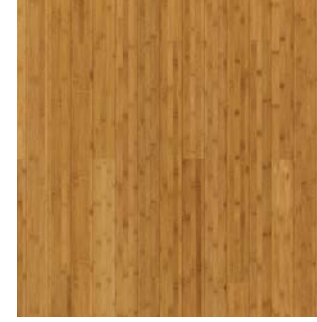
ORGANIC 567, CHAI OAK



TRUE, ORRIS MAPLE



ALTA VISTA, DEL MAR OAK



TERAGREN BAMBOO, FLAT GRAIN CAMELIZED



SERENITY, DREAM OAK



NOVELLA, TWAIN OAK



GRAIN & SAW, GREENE MAPLE



ORGANIC 567, GUNPOWDER OAK



TERAGREN, GRASSLANDS



GRAIN & SAW, MORRIS OAK



AVENUE, WILSHIRE OAK



SERENITY, CLEAR OAK



VENTURA, DUNE OAK



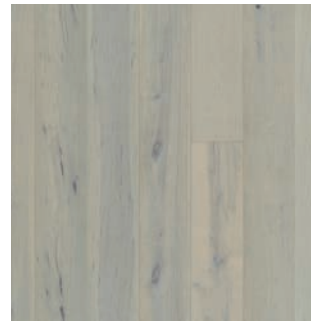
GRAY - NEUTRAL



COURTIER, KINGSGUARD OAK



TRUE, JUNIPER MAPLE



AVENUE, LOMBARD MAPLE



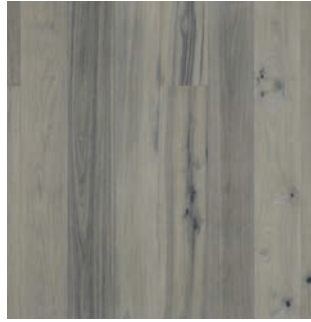
SERENITY, PURE OAK



TERAGREN BAMBOO, POLLOCK



TRUE, SILVER NEEDLE OAK



TRUE, JASMINE HICKORY



ALTA VISTA, DOHENY OAK



ALTA VISTA, SANTA MONICA OAK



AVENUE, SUNSET OAK



SERENITY, FAIR OAK



ALTA VISTA, C AMBRIA OAK



TERAGREN BAMBOO, OPEN RANGE



ALTA VISTA, PISMO OAK



ALTA VISTA, BIG SUR OAK



ORGANIC SOLID, TARRAGON OAK



NOVELLA, ALCOTT MAPLE



SERENITY, SERENE OAK



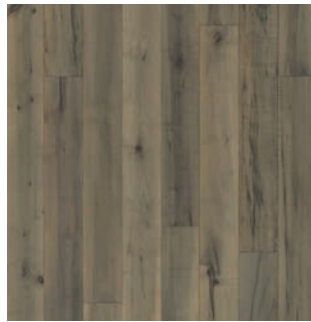
AVENUE, RODEO OAK



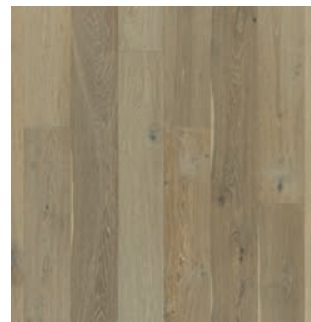
ORGANIC 567, GINSENG OAK



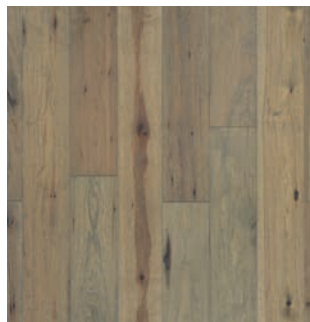
ORGANIC 567, MARIGOLD OAK



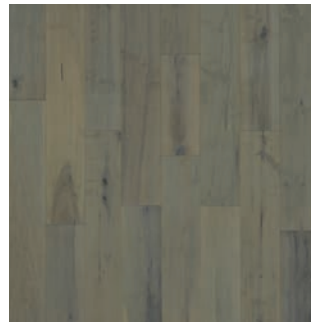
GRAIN & SAW, TIFFANY MAPLE



VENTURA, WHITE CAP OAK

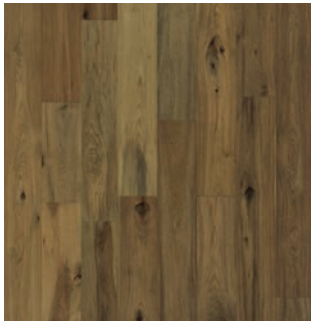


VENTURA, SANDBAR MAPLE



NOVELLA, WILLIAMS MAPLE

BROWN - DARK



NOVELLA, RAND HICKORY



NOVELLA, WHITMAN OAK



TRUE, GARDENIA OAK



AVENUE, MICHIGAN HICKORY



GRAIN & SAW, HOFFMAN HICKORY



VENTURA, PIER OAK



AVENUE, MULLHOLLAND OAK



VENTURA, MANGROVE OAK



VENTURA, MARITIME WALNUT



AMERICAN TRADITIONAL CLASSICS, WALNUT



ORGANIC 567, DARJEELING HICKORY



ORGANIC 567, EUCALYPTUS LEAF OAK



GRAIN & SAW, STICKLEY HICKORY



AVENUE, NEWBURY HICKORY



MONTEREY, GAUCHO HICKORY



ORGANIC SOLID, TAMARIND WALNUT



SERENITY, CALM OAK



ORGANIC SOLID, TURMERIC HICKORY



GRAIN & SAW, RUSKIN OAK



TRUE, NEROLI OAK



MONTEREY, CASITA HICKORY



TERAGREN BAMBOO, WARHOL



TRUE, ONYX OAK



SERENITY, HONEST OAK



MONTEREY, CALGARY RED OAK

# COLLECTIONS

Dramatically enhance the beauty of your interior. With a relentless commitment to quality, our wood floor collections are handcrafted in small batches by professional hardwood craftsmen, providing greater client satisfaction and confidence.

## TRUE

- oil
- replicated driftwood
- through color
- handcrafted bevel

**ENGINEERED HARDWOOD**

**WIDTH:** 7½"

**LENGTH:** RL 6'2"

**THICKNESS:** 5/8" 3MM SAWN

**FINISH:** NU OIL® SUPER-MATTE

**WARRANTY:** LIMITED LIFETIME STRUCTURAL & RESIDENTIAL FINISH



**WINNER:**  
GOOD DESIGN® AWARD



GINGER LILY OAK

LEMON GRASS OAK

JUNIPER MAPLE

ORRIS MAPLE

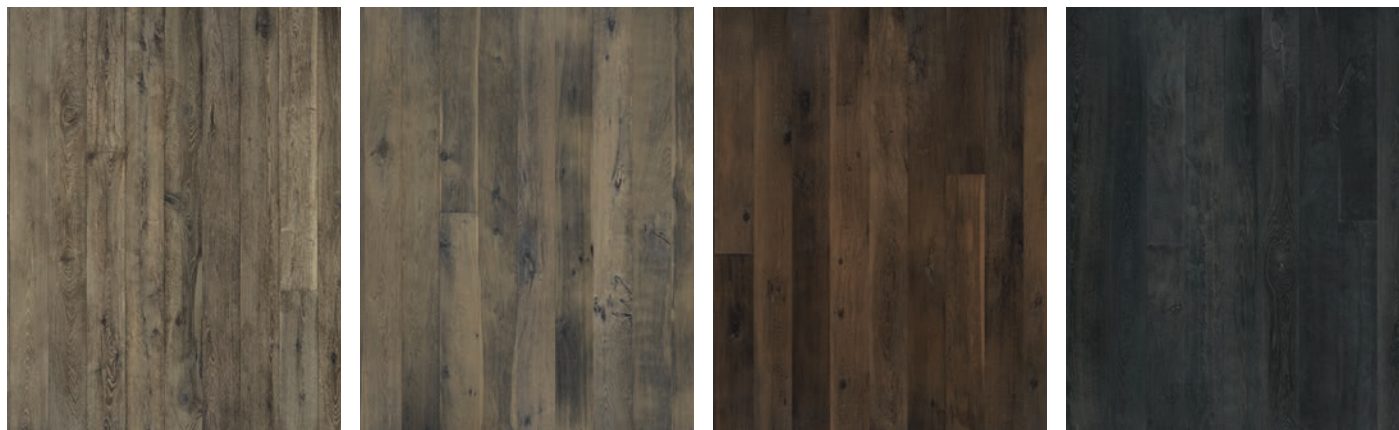


ORANGE BLOSSOM HICKORY

AMBER PINE

JASMINE HICKORY

SILVER NEEDLE OAK



MAGNOLIA HICKORY

GARDENIA OAK

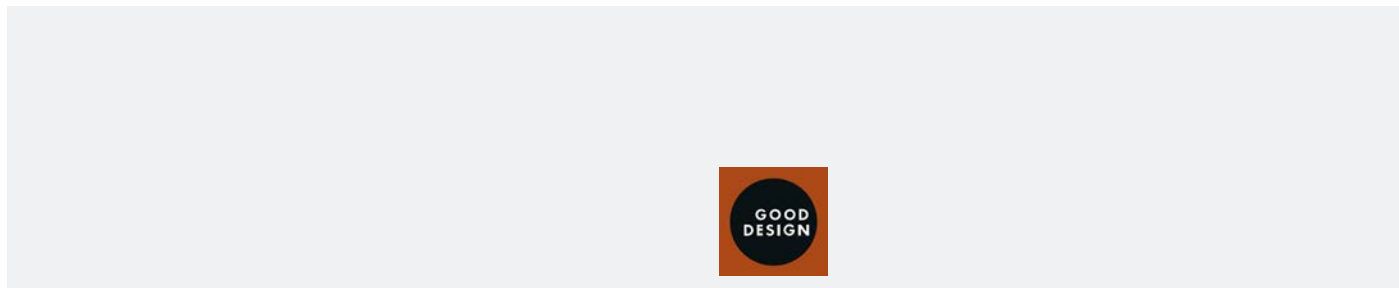
NEROLI OAK

ONYX OAK

INSTALL OPTIONS: Glue Down, Nail w/ Glue Assist (Staple), Over Radiant Heat (Excluding Nail Down & Hickory.)

## SERENITY

- glazetek
- wire brushed / smooth
- CLEANER GRADE
- handcrafted bevel

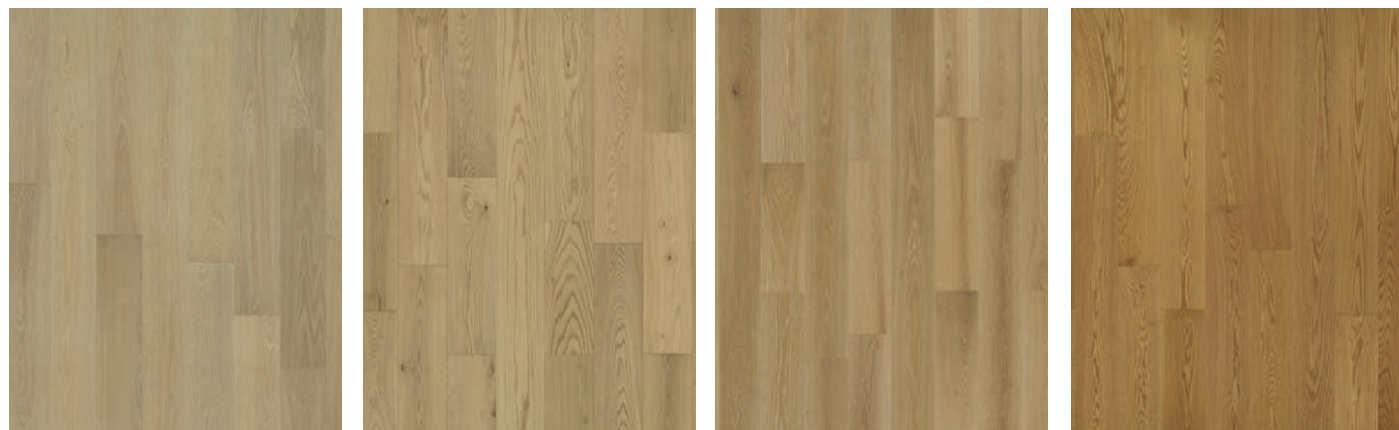


COZY OAK

PURE OAK

FAIR OAK

AGLOW OAK

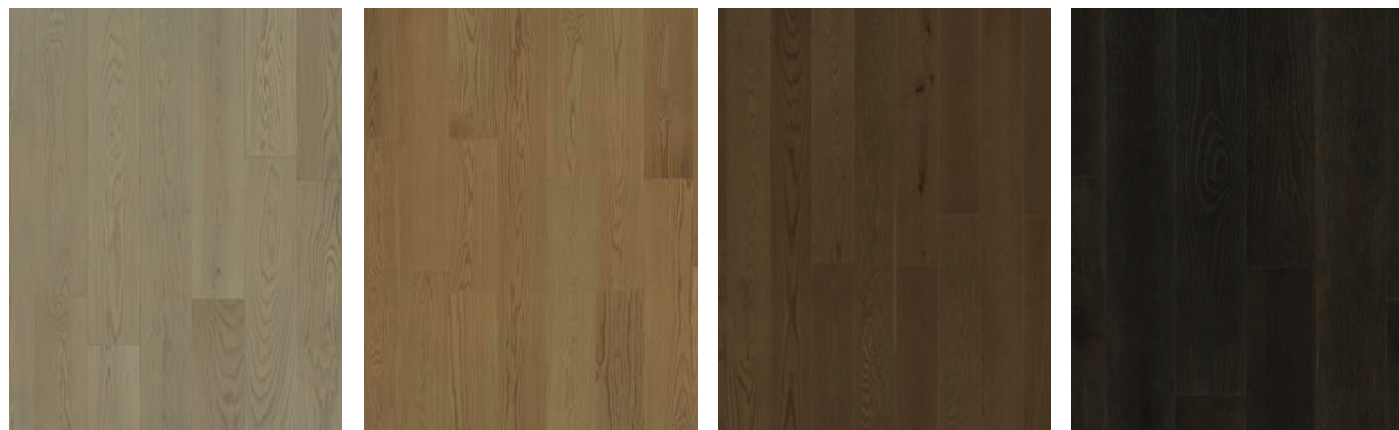


BLISS OAK

TRANQUIL OAK

PEACE OAK

DREAM OAK



SERENE OAK

CLEAR OAK

CALM OAK

HONEST OAK

INSTALL OPTIONS: Glue Down, Staple, Float, and Over Radiant Heat  
For more information on the Good Design® Award, go to page 117.

**DESIGN  
EMPORIUM**



wire brushed / smooth



handcrafted bevel

**ENGINEERED HARDWOOD**

**WIDTH: 3.54"**

**LENGTH: 17.72"**

**THICKNESS: 5/8" 4MM SAWN**

**FINISH: TRUEMARK GLAZETEK®**

**WARRANTY: LIMITED LIFETIME STRUCTURAL & RESIDENTIAL FINISH**



**WINNER: OBSIDIAN OAK  
GOOD DESIGN® AWARD**



CRYSTAL OAK



OPAL OAK



QUARTZ OAK



AMBER OAK



AGATE OAK



OBSIDIAN OAK

INSTALL OPTIONS: Glue Down, Staple, Float, and Over Radiant Heat

**ALTA VISTA**



wire brushed / hand sculpted

fumed product

handcrafted bevel

**ENGINEERED HARDWOOD**

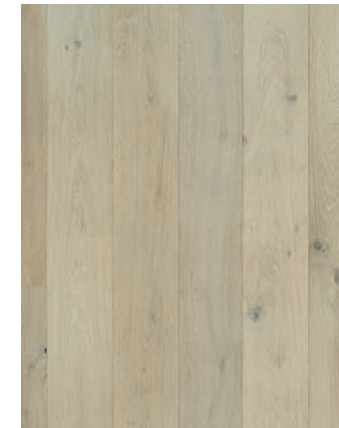
**WIDTH: 7½"**

**LENGTH: RL 6'2"**

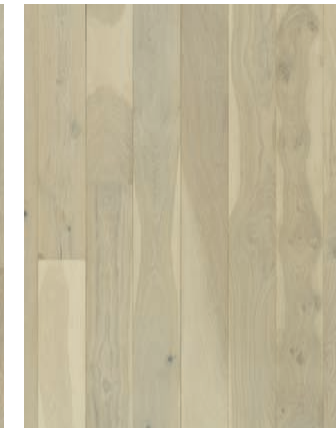
**THICKNESS: 5/8" 4MM SAWN**

**FINISH: NU OIL®**

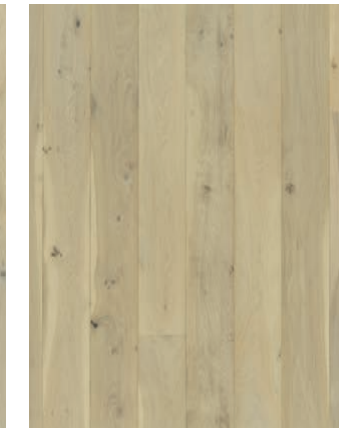
**WARRANTY: LIMITED LIFETIME STRUCTURAL & RESIDENTIAL FINISH**



BALBOA OAK



VENICE OAK



HUNTINGTON OAK



CARDIFF OAK



LAGUNA OAK



CAMBRIA OAK



SANTA MONICA OAK



DOHENY OAK



DEL MAR OAK



MALIBU OAK



PISMO OAK



BIG SUR OAK

INSTALL OPTIONS: Glue Down, Staple, Float, and Over Radiant Heat

# AVENUE



wire brushed / hand sculpted

fumed product (oaks)

handcrafted micro bevel

ENGINEERED HARDWOOD

WIDTH: 9 1/2"

LENGTH: RL 7'2"

THICKNESS: 5/8" 4MM SAWN

FINISH: TRUEMARK® GLAZETEK

WARRANTY: LIMITED LIFETIME STRUCTURAL & RESIDENTIAL FINISH



OCEAN DRIVE OAK



LOMBARD MAPLE



SUNSET OAK



RODEO OAK



BELLE MEADE HICKORY



PENNSYLVANIA MAPLE



WILSHIRE OAK



MICHIGAN HICKORY



NEWBURY HICKORY



MULHOLLAND OAK

INSTALL OPTIONS: Glue Down, Staple, Float, and Over Radiant Heat (Excluding Hickory)

# AMERICAN TRADITIONAL CLASSICS



smooth

handcrafted bevel

ENGINEERED HARDWOOD

WIDTH: 5" OR 3 1/4"

LENGTH: RL 7'2"

THICKNESS: 1/2" 3MM SAWN

FINISH: TRUEMARK® GLAZETEK

WARRANTY: LIMITED LIFETIME STRUCTURAL & RESIDENTIAL FINISH



LINEN WHITE OAK



HAYSTACK MAPLE



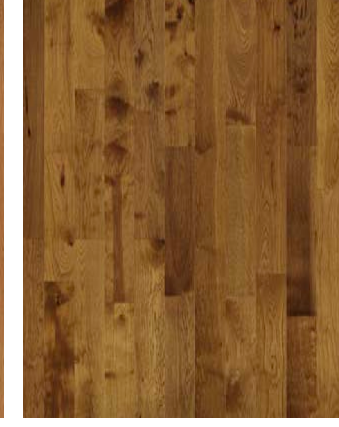
NATURAL RED OAK



NATURAL WHITE OAK



AUBURN RED OAK



BUCKSKIN HICKORY



SADDLE WHITE OAK

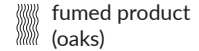
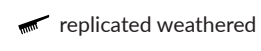


NATURAL WALNUT

INSTALL OPTIONS: Glue Down, Staple, Float, and Over Radiant Heat (Excluding Hickory)

\*Select, Mill & Character Grades Available

# ORGANIC 567



## ENGINEERED HARDWOOD

WIDTH: 5", 6", 7½"

LENGTH: RL 6'2"

THICKNESS: 5/8" 4MM SAWN

FINISH: NU OIL®

WARRANTY: LIMITED LIFETIME STRUCTURAL & RESIDENTIAL FINISH



HIBISCUS OAK



PEKOE OAK



GUNPOWDER OAK



CHAI OAK



MARIGOLD OAK



GINSENG OAK



CHAMOMILE HICKORY



OOLONG HICKORY



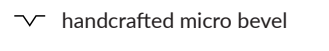
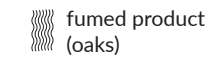
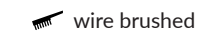
EUCALYTPUS LEAF OAK



DARJEELING HICKORY

INSTALL OPTIONS: Glue Down, Staple, Float, and Over Radiant Heat (Excluding Hickory)

# VENTURA



## ENGINEERED HARDWOOD

WIDTH: 7½"

LENGTH: RL 6'2"

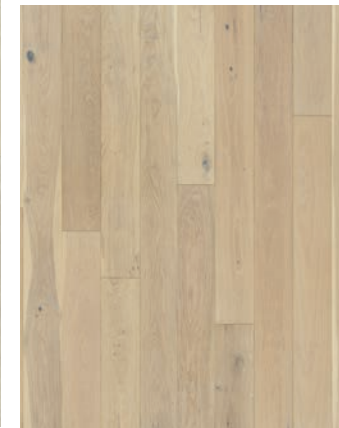
THICKNESS: 1/2" 2MM SLICE

FINISH: NU OIL® (OAK) OR TRUEMARK® GLAZETEK (MAPLE, HICKORY)

WARRANTY: LIMITED LIFETIME STRUCTURAL & RESIDENTIAL FINISH



PEARL OAK



SEASHELL OAK



WHITE CAP OAK



SANDAL OAK



MARINA OAK



DUNE OAK



SANDBAR HICKORY



HAMPTON HICKORY



PIER OAK



WHARF OAK



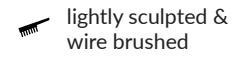
MARITIME WALNUT



MANGROVE OAK

INSTALL OPTIONS: Glue Down, Nail, Float, and Over Radiant Heat (Excluding Hickory)

# MONTEREY



## ENGINEERED HARDWOOD

WIDTH: 4", 6", 8"

LENGTH: RL 6'2"

THICKNESS: 1/2" 2MM SLICE

FINISH: TRUEMARK® GLAZETEK

WARRANTY: LIMITED LIFETIME STRUCTURAL & RESIDENTIAL FINISH



VILLA OAK

APPALOOSA RED OAK

ALHAMBRA OAK

ADOBE RED OAK



CHEYENNE OAK

CANTINA RED OAK

PALOMINO HICKORY

RANCHERO HICKORY



PUEBLA HICKORY

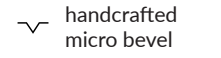
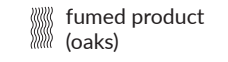
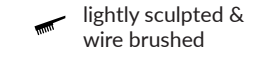
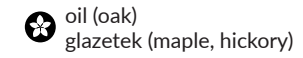
GAUCHO HICKORY

CASITA HICKORY

CALGARY RED OAK

INSTALL OPTIONS: Glue Down, Staple, Float, and Over Radiant Heat (Excluding Hickory)

# NOVELLA



## ENGINEERED HARDWOOD

WIDTH: 6"

LENGTH: RL 6'2"

THICKNESS: 7/16" NOMINAL, 1.5MM SLICE

FINISH: NU OIL® (OAK) OR TRUEMARK® GLAZETEK (MAPLE, HICKORY)

WARRANTY: LIMITED LIFETIME STRUCTURAL & RESIDENTIAL FINISH



HAWTHORNE OAK

ALCOTT MAPLE

HEMINGWAY OAK

TWAIN OAK



FROST MAPLE

EMERSON OAK

WHITMAN OAK

WILLIAMS MAPLE



RAND HICKORY

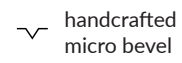
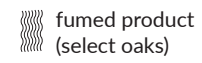
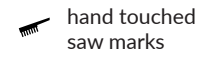
ELIOT HICKORY

FAULKNER HICKORY

THOREAU HICKORY

INSTALL OPTIONS: Glue Down, Staple, Float, and Over Radiant Heat (Excluding Hickory)

## GRAIN & SAW



### ENGINEERED HARDWOOD

WIDTH: 6"

LENGTH: RL 6'2"

THICKNESS: 7/16" 1.5MM SLICE

FINISH: TRUEMARK® GLAZETEK

WARRANTY: LIMITED LIFETIME STRUCTURAL & RESIDENTIAL FINISH



BALLENTINE OAK



GREENE MAPLE



MORRIS OAK



TIFFANY MAPLE



HOFFMAN HICKORY



RUSKIN OAK



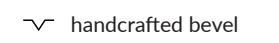
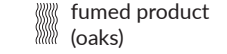
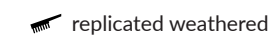
LARSSON HICKORY



STICKLEY HICKORY

INSTALL OPTIONS: Glue Down, Staple, Float, and Over Radiant Heat (Excluding Hickory)

## ORGANIC SOLID



### 3/4" SOLID HARDWOOD

WIDTH: 3 1/4", 4"

LENGTH: RL 6'2"

THICKNESS: 3/4"

FINISH: NU OIL®

WARRANTY: LIMITED LIFETIME STRUCTURAL & RESIDENTIAL FINISH



SORREL OAK



POPPY SEED RED OAK



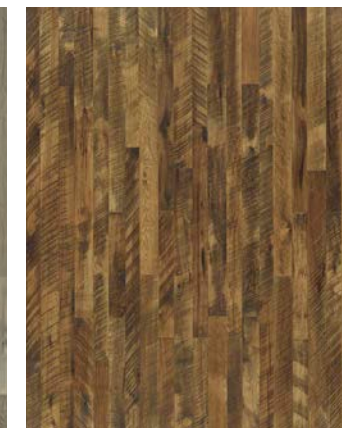
CARAWAY OAK



FENNEL OAK



TARRAGON OAK



TULSI HICKORY



NUTMEG HICKORY



MOROCCAN HICKORY



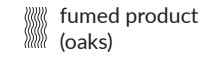
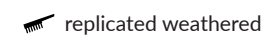
TAMARIND WALNUT



TURMERIC HICKORY

INSTALL OPTIONS: Glue Down & Staple [Hallmark Solid Hardwood Floors are not suitable for use over Radiant Heat]

# CRESTLINE SOLID



**3/4" SOLID HARDWOOD**

**WIDTH: 5" NOMINAL**

**LENGTH: RL 6'8"**

**THICKNESS: 3/4"**

**FINISH: NU OIL®**

**WARRANTY: LIMITED LIFETIME STRUCTURAL & RESIDENTIAL FINISH**



MONROE OAK



MONTBLANC OAK



AUGUSTA OAK



GENEVA OAK



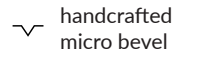
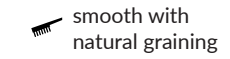
SHASTA OAK



PORTER RED OAK

INSTALL OPTIONS: Glue Down & Staple [Hallmark Solid Hardwood Floors are not suitable for use over Radiant Heat]

# TERAGREN BAMBOO



## NEOTERA | ENGINEERED STRAND BAMBOO

**WIDTH: 5.12"**

**LENGTH: 72.83"**

**THICKNESS: .47"**

**FINISH: GLAZETEK®**

**WARRANTY: LIMITED LIFETIME STRUCTURAL & 25 YEAR RESIDENTIAL FINISH**

**INSTALL: NAIL / GLUE**



ROTHKO



POLLOCK



KRUGER



WARHOL

## ESSENCE | ENGINEERED STRAND BAMBOO

**WIDTH: 7.48"**

**LENGTH: 72.83"**

**THICKNESS: .55"**

**FINISH: GLAZETEK®**

**WARRANTY: LIMITED LIFETIME STRUCTURAL & 25 YEAR RESIDENTIAL FINISH**

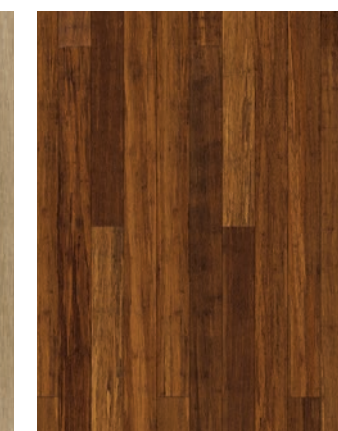
**INSTALL: NAIL / GLUE**



WHEAT



GRASSLANDS



CHESTNUT



TUNDRA



OPEN RANGE



MEADOWS



**SYNERGY SOLID | SOLID STRAND BAMBOO**

WIDTH: 3.78"

LENGTH: 72.83"

THICKNESS: .47"

FINISH: GLAZETEK®

WARRANTY: LIMITED LIFETIME STRUCTURAL & 25 YEAR RESIDENTIAL FINISH

INSTALL: NAIL / GLUE



WHEAT



CHESTNUT

**SOLID NATURALS | SOLID TRADITIONAL BAMBOO**

WIDTH: 3.78"

LENGTH: 37.80"

THICKNESS: .59"

FINISH: GLAZETEK®

WARRANTY: LIMITED LIFETIME STRUCTURAL & 25 YEAR RESIDENTIAL FINISH

INSTALL: NAIL / GLUE



FLAT GRAIN CARAMELIZED

INSTALL OPTIONS: All Bamboo products can be Nailed or Glue Down ONLY.

**COURTIER RIGID VINYL**

surface guardian pro uv coating

EIR wood

painted bevel

waterproof

**RIGID VINYL CLICK**

WIDTH: 9"

LENGTH: 59"

THICKNESS: 5.5MM

WEAR LAYER: 20MIL (.5MM)

FINISH: SURFACE GUARDIAN PRO

WARRANTY: LIMITED LIFETIME STRUCTURAL & RESIDENTIAL FINISH



CANTERBURY OAK



BRAIR OAK



GHENT OAK



NIGHTCASTLE OAK



CHARLEMAGNE OAK



CAMARILLA OAK



DURHAM OAK



KINGSGUARD OAK



KNIGHT OAK



CLYDE MAPLE



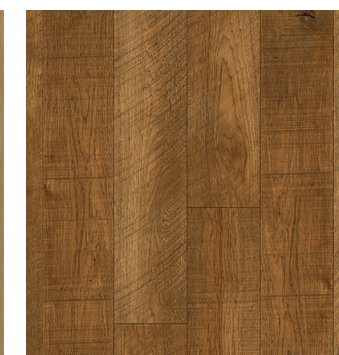
CHANCELLOR OAK



ADMIRAL OAK



GRIFFITH OAK



GALLOWAY HICKORY



FALCONER OAK



ROHAN OAK

INSTALL OPTIONS: Courtier has an IXPE attached pad, and is a floating installation only

# QUALITY IN EVERY GRAIN

Our collections are small batch, hand-touched & not mass produced, and are always designed with fashion in mind. The subtle nuances that make Hallmark Floors unique are all done by hand and inspired by the natural graining of the wood. The 100% hand scraping that imitates turn-of-the-century flooring and the multi-step weathering techniques beautifully highlights the inherent characteristics found in nature. By layering all of the processes together, it enhances the style and cut of the plank.

## Hardwood Construction



Hallmark Floors' engineered hardwood floors is constructed with an ultra thick wear layer has the same usable surface as 3/4" solid hardwood flooring, which allows 3 guaranteed sandings. Sliced and rotary veneer layers allow up to 2 guaranteed sandings.



## Superior Wear Layer

Hallmark Floors' hybrid sawn cut engineered wood planks feature the same wear layer as solid hardwood.



## TRUECORE® Construction

Hallmark Floors uses only true hardwood veneers and Carb II compliant glues for the center-ply in our engineered floors' hardwood construction. The center veneers are cold pressed, then hot pressed with tremendous pressure. This process makes the center core Eco-friendly, harder and more proportionally stable.

- Higher Stability
- Higher Strength
- Higher Density
- Higher Indoor Air Quality

Truecore® is third party verified and surpasses the emission requirements.

## WOOD FINISH TECHNOLOGY



## NU OIL® HYBRID MULTI-LAYER OIL FINISH

Nu Oil® employs a revolutionary new technology. The finish has unique performance characteristics and durability that make it a great choice for someone who wants the visual character that only oil can provide. Oil finishes have been used for centuries on floors and furniture. Nu Oil® uses proprietary technology in the application of numerous coats of oil finish in the factory that make it the industry leader in wearability and stain resistance in oil finish.

Due to the unique hybrid multi-coat technology of Nu Oil®, it is not necessary to apply an additional coat of oil at the time of installation. That can be reserved for a later date when it becomes desirable to refresh and renovate the floor. Clean with Hallmark Floors Nu Oil® Cleaner.

### Hallmark Floors Collections with Nu Oil® Finish:

- True
- Organic Engineered 567
- Alta Vista
- Ventura (Oak Only)
- Novella (Oak Only)
- Organic Solid
- Crestline Solid



## TRUEMARK® GLAZE TEK FINISH

Four coats of hand-applied base and accent colors, combined with twelve coats of finish, achieve a depth and richness unparalleled anywhere in the hardwood flooring industry. Nano technology is incorporated into the surface and fortified with aluminum oxide for a finish that is so durable, it carries a limited lifetime warranty against wear-through. Years of research and development have resulted in the first true, high-fashion, glazed furniture-finish to be applied to a hardwood floor. Clean with Hallmark Floors TrueClean® Cleaner.

### Hallmark Floors Collections with TrueMark® Glaze Tek Finish:

- Avenue
- American Traditional Classics
- Serenity
- Monterey
- Grain & Saw
- Ventura (Maple, Hickory & Walnut Only)
- Novella (Maple & Hickory Only)
- Teragren Bamboo



## Sawn-Cut Style

Experts in the industry agree that sawn-cut provides the best quality, stability & visuals for solid & engineered floors. Sawn-cut engineered floors allow for the thickest veneer (4mm) with the highest degree of stability. Engineered sawn-cut wear layers are the ONLY engineered floors that are equal to solid wood floors.



## Slice-Cut Style

Slice-cut features the same beautiful look as sawn cut veneers and is the second most common way to create a wood veneer, it's just in thinner layers (2mm or less). This creates stunning visuals while still providing stability for engineered wood floors.



## HEARTWOOD & SAPWOOD

The difference between the inner part of the tree (heartwood) and the outer part of the tree (sapwood) can be seen as variations of light and dark. The natural contrast between heartwood and sapwood plays a major role in the color of wood floors. Variations can occur from board to board, as well as in the same board. This occurs naturally, and is not an "unfinished" board.

Staining wood floors can diminish the appearance of heartwood and sapwood, but it doesn't entirely hide these natural characteristics. The stain helps to blend the natural contrasts together. It doesn't eliminate it. Fuming has the opposite affect on heartwood and sapwood. Fumed floors are designed on purpose to magnify the natural contrast.



## LIGHT EXPOSURE & NATURAL CHANGES

Varying changes (patina) can occur when wood is exposed to UV rays from sunlight, florescent, LED, and incandescent bulbs. Window coverings, UV resistant tint, solar screens can minimize but not eliminate this natural occurrence. Certain species are more susceptible to light & development of varying degrees/shades of patina, due to their high content of natural oils.

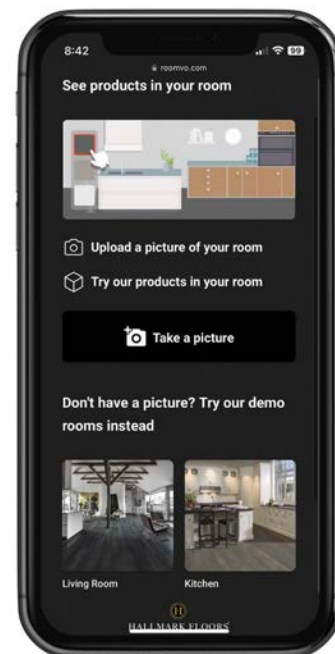
Hallmark hardwood floors are created to showcase the natural beauty of wood. As such, the planks will contain natural mineral deposits/streaking, and both closed and filled knots. Wood is a natural product that features distinct color and graining. Each board is unique in its characteristics and will vary from piece to piece. Each board can vary from a clean to rustic visual.

# ROOM VISUALIZER



Hallmark Floors offers unlimited inspiration through our room visualizer. Allowing you to take photos of your home, and place the Hallmark Floors of your choosing to see what your home could like. Endless possibilities show the flooring laid both vertically or horizontally. Switch from collection to collection and species to species to find the flooring that fits the look you're aiming to achieve.

With 3 easy steps: Simply take a photo of your space, upload it to Hallmark's Room Visualizer on our website, and find the perfect floor. It's user friendly, and allows easy browsing with mobile and desktop options.



# FIND YOUR FLOOR

Are you a homeowner looking to breathe new life into your space with a stunning flooring upgrade? Look no further! Our innovative "Find Your Floor" feature is here to transform your vision into reality. Experience the joy of discovering your dream floor like never before, tailored to your unique preferences and lifestyle.

Say goodbye to overwhelming choices and endless searches. Our user-friendly "Find Your Floor" tool simplifies the process, making it enjoyable and efficient. We understand that your home is your sanctuary, and we're committed to helping you find the perfect floor to complement your style.



# AWARD WINNING



GOOD DESIGN® the oldest and the most Prestigious Awards Program. The Chicago Athenaeum Museum of Architecture and Design and Metropolitan Arts Press Ltd. present the Museum's annual GOOD DESIGN® Awards Program for the most innovative and cutting-edge industrial, product, and graphic designs produced around the world.

You're only as good as the company you keep, from Google Home to Apple TV, from Pyrex® to Audi - we are honored to be mentioned amongst the top brands in design throughout the world.



Best of Houzz celebrates the Houzz community's picks for top-rated design and renovation professionals and popular home designs across the U.S. and around the world. Professionals on Houzz can earn a Design or Service award, or both, in the same year. Hallmark Floors has been a Best of Houzz winner consecutively since 2016. Top rated by homeowners & designers alike.



HALLMARKFLOORS.COM